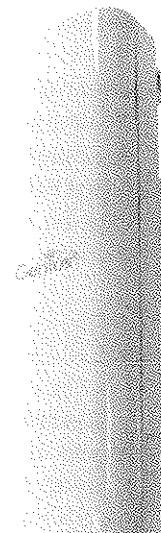


**E** OOC-2610 is a long range outdoor wireless Access Point and Client Bridge that operates seamlessly in the 2.4GHz frequency spectrum. It features high transmitted output power and high receivable sensitivity along with antenna diversity. High output power and high sensitivity can extend range and coverage to reduce the roaming between Access Points to get a more stable wireless connection. It also reduces the expense of equipment in the same environment.

This Guide will assist you in setting up the Access Point as quickly as possible and with the least effort.



## IP Address Configuration

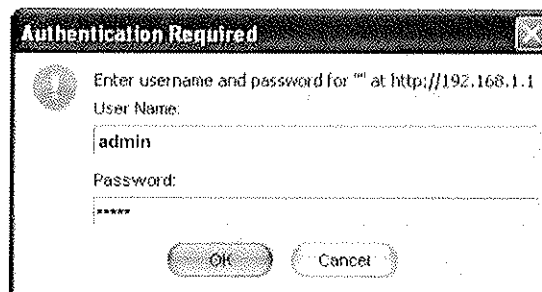
The default IP address of the device is **192.168.1.1**. In order to log into this device, you must first configure the TCP/IP settings of your PC/Notebook.

1. In the control panel, double click Network Connections and then double click on the connection of your Network Interface Card (NIC). You will then see the following screen.
2. Select **Internet Protocol (TCP/IP)** and then click on the **Properties** button. This will allow you to configure the TCP/IP settings of your PC/Notebook.
3. Select **Use the following IP Address** radio button and then enter the IP address (192.168.1.21) and subnet mask (255.255.255.0). Ensure that the IP address and subnet mask are on the same subnet as the device.
4. Click on the **OK** button to close this window, and once again to close LAN properties window.

## Logging In

1. To configure the device through the web-browser, enter the IP address of the Bridge (**default: 192.168.1.1**) into the address bar of the web-browser and press **Enter**.
2. After connecting to the IP address, the web-browser will display the login page.

Specify **admin** as the default **User Name** and **Password**, and then click on the **Login** button.



## Administration

1. Click on the **Administration** link under the **Management section**. This option allows you to create a new user name and password for the device. For security it is highly recommended for security reasons.
2. **Name:** Specify a user name into the first field.
3. **Password:** Specify a password into this field and then re-type the password into the **Confirm Password** field. Then click on the **Apply** button.
4. Click on the **Apply** button to save the changes.

## System Properties

1. Click on the **System Properties** link on the **System section**. This feature allows you to configure the device as an Access Point or Repeater.

## Quick Start Guide

### Wireless Access Point & Client Bridge

---

2. **Device Name:** Specify a name for the device – this is not the SSID.
3. **Country/Region:** Select the region from the drop-down list.
4. **Operation Mode:** Select **Access Point**, **Client Bridge** or **Router** radio button.
5. Click on the **Apply** button to save the changes.

#### IP Settings

1. Click on the **IP Settings** link on the **System section**. This feature allows you to configure the LAN interface using a static IP address or as a DHCP client. This IP address is also used to access the web-based interface.
2. **IP Network Setting:** Select **Obtain an IP address automatically (DHCP)** radio button if the Access Point is connected to a DHCP server. This will allow the Access Point to pass IP addresses to the clients associated with it.

#### WARNING:

If device failed to obtain valid IP from a DHCP server, the device will be inaccessible. To access the device you will have press reset button for 5 seconds to restore IP settings back to 192.168.1.1.

You may select **Specify an IP Address** radio button if you would like the device to use a static IP address. In this case, you would be required to specify an IP address, subnet mask, and default gateway IP address.

3. **IP Address:** Specify an IP address
4. **IP Subnet Mask:** Specify the subnet mask for the IP address
5. **Default Gateway:** Specify the IP address of the default gateway.
6. Click on the **Apply** button to save the changes.

**Note:** If you change the IP address here, you may need to adjust your PC's network settings to access the network again.

#### Wireless Network & Security

1. Click on the **Wireless Network** link on the **Wireless section**. This feature allows you to configure the wireless mode, channel, SSID, and security settings.

2. **Wireless Mode:** Depending on the type of wireless clients that are connected to the network, you may select **B**, **G**, or **B/G-mixed**.
3. **Channel:** Select a channel from the drop-down list. The channels available are based on the country's regulation.
4. You may configure up to four different wireless profiles. Click on the **Edit** button to modify the profile and place a check in the Enable box to activate the profile.
5. **SSID:** The SSID is a unique named shared amongst all the points of the wireless network. The SSID must be identical on all points of the wireless network and cannot exceed 32 characters.
6. **VLAN ID:** If you have enabled VLAN tagging on your network, specify the VLAN tag ID.
7. **Suppressed SSID:** Place a check in this box if you would like to hide the SSID. By enabling this feature, wireless clients will not be able to scan this access point in a site survey.
8. **Station Separator:** This is also known as layer 2 isolation. Clients connected to this Access Point will not be able to directly communicate with each other.
9. **Security Mode:** By default, the security is disabled. Refer to the user's Manual to configure the security features such as WEP, WPA, WPA-PSK, WPA2, WPA2-PSK and WPA-Mixed.
7. Click on the **Apply** button to save the changes